

Twain Sullivan 2020-21

Back to School Plan

We are excited to welcome back students to a new school year! School will look a bit different, so we wanted to help families understand what to expect.

First Week Back

K-12 Schools are in				
Remote learning for all	Remote learning with exceptions	In-class & remote learning	Learning groups: full-time in-class	Learning as usual: full-time in-class
Stage 5	Stage 4	Stage 3	Stage 2	Stage 1

A learning group is a group of students and staff who remain together throughout the school. Your child's learning group will be their class along with one other class.

Grades 1-7 will only attend one day of school during the first week.

Grades 1-3 - Thursday, September 10th from 9:00-1:50

Grades 4-7 – Friday, September 11th from 9:00-3:05.

Kindergarten has their own separate schedule that was sent home by Ms. Mark.

Orientation week for K-12 schools				
September				
7	8	9	10	11
Labour Day	Teachers and staff return		Student orientation	

Physical Distancing & Learning Groups



- People in a learning group don't need to stay two metres apart but they must limit physical contact.

Learning Groups
Kindergarten & Grade 1
Grade 2 & Grade 3
Grade 4 & Grade 5
Grade 6 & Grade 7

- Classrooms and entrances/ exits will be set up to promote spacing between students where possible. (see schedule below)
- Learners should maintain physical distance of 2m from each other and staff members who are not part of their learning group (i.e. hallways and playground).

Health Checks

The BCCDC guidelines for schools are firm. If a student, staff member or any other adult has any symptoms of a cold, influenza, COVID-19, or any other infectious respiratory disease, **they must not enter the school.**



- Caregivers and parents must assess their children daily to confirm that their child does not have symptoms of illness.
- Teachers will be conducting health checks when they welcome students into the school each day.
- If a child does demonstrate symptoms, parents will be called right away and the child will be sent home.
- Please monitor your child's symptoms using the BC COVID-19 self-assessment test <https://bc.thrive.health/>
- If your child develops severe symptoms, call 8-1-1 for information and advice.

Hand Washing

Rigorous hand washing is the most effective way to reduce the spread of illness.



- Wash hands with plain soap and water for at least 20 seconds
- Learners must wash their hands often throughout the day: upon entering the school, before or after eating, after using the bathroom, when moving between different learning environments, after a sneeze or cough
- If there isn't a sink (like when students and staff are outdoors), use portable hand-washing sites or alcohol-based hand rub with at least 60% alcohol.

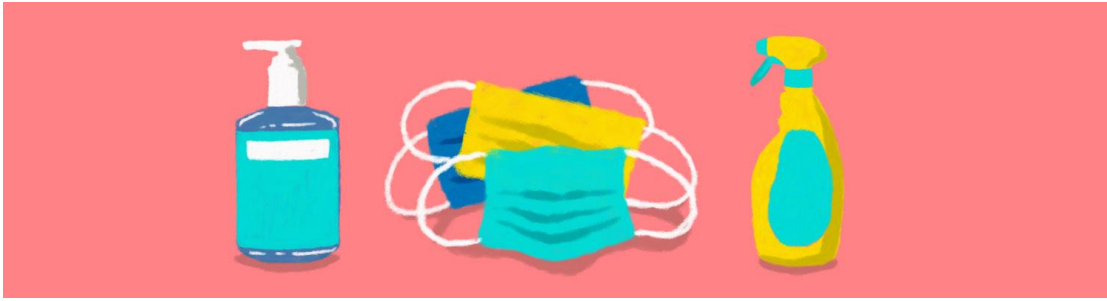
Bussing

- Bussing will be running this fall. See the SD54 website for a link containing more information.
- Families are encouraged to be as consistent as possible when sending students on the bus.
- Grade 5-12 students will be expected to wear a mask while riding the bus.



Outside Learning

- Students and Classes will be encouraged to go outside as much as possible.
- All students should be prepared to go outside everyday!
- Please dress warm and appropriately.



Masks

Masks are required for grade 5-7 on buses. If students do not have non-medical masks to wear, one will be provided.

At this time, elementary students are not required to wear masks while in school. Students will have the choice to wear a mask in the classroom.

- Staff and students will have the choice to wear a mask when interacting within their learning group.
- Students and staff should wear a mask when they cannot safely distance from others outside their learning group,
- Everyone must treat each other and those wearing masks with respect.

Belongings

- Feel free to share smiles, love, kindness but NOT toys, supplies, food or personal items.
- There is no evidence that COVID-19 is transmitted on textbooks, paper, or other paper-based products.
- Schools can share books or paper-based educational resources with students

Cleaning the School

- Frequently touched surfaces will be cleaned and disinfected at least twice every 24 hours (once during the school day).



Visitors

- During this time, we respectfully ask that parents refrain from entering the school unless it is necessary. We love our parents, but we will need to love them from afar for now.
- Visitors must enter the front door and check in immediately at the office. Visitors who are feeling unwell are asked to refrain from entering.

Other considerations:

- Social-emotional well being will be an important part of students' learning.
- Windows will be open more often to improve ventilation; please send your child with a sweater or other warm clothing.
- Classes are encouraged to spend time outside so please make sure your child has clothing for the day's weather.
- Water fountains will not be operating so please send your child with a water bottle. The water bottle fill station is still operating. The breakfast program may operate with modifications.

We look forward to a safe, happy, healthy and calm return to school!

Start and End Times

In order to minimize contact between learning groups, Twain Sullivan will be instituting staggered start and end times. Please see the bell schedule below:

Group A	Grades: 2, 3, 6, 7
Start	9:00am
Recess	10:20am - 10:35am
Lunch/Play Outside	12:00pm - 12:30pm
Lunch/Eating Inside	12:30pm - 12:45pm
Dismissal	2:55pm

Group B	Grades: K, 1, 4, 5
Start	9:10am
Recess	10:40am - 10:55am
Lunch/Eating Inside	12:30pm - 12:45pm
Lunch/Play Outside	12:45pm - 1:15pm
Dismissal	3:05pm



****These times are subject to change**

Student Entry & Exit

In order to minimize contact between learning groups, entry and exit doors will be limited for students. Below are the entrances/exits each grade will be using. Please note the Group A and Group B schedule times listed above.

Grade	Entry/Exit Point
Kindergarten – Ms. Mark	Exterior Classroom Door
Grade 1 – Mr. Richardson	Primary Entrance (Group B Times)
Grade 2 – Ms. Timms	Exterior Classroom Door
Grade 2/3 – Ms. Carr	Primary Entrance (Group A Times)
Grade 4/5 – Ms. Klassen	Intermediate Entrance
Grade 5 – Ms. Hitchmough	Intermediate Entrance
Grade 6 – Ms. Lester	Music Room Hallway Entrance
Grade 6/7 – Ms. Williamson	Exterior Classroom Door

All the staff at Twain Sullivan Elementary are excited to welcome students back! We look forward to seeing you soon!!!